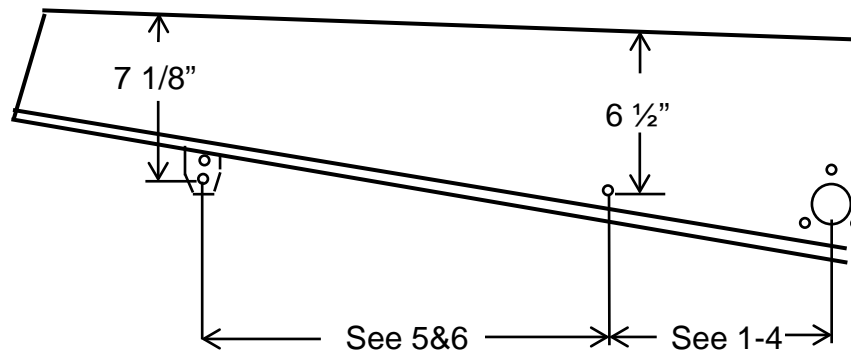




## Wahl Oval Race Suspension, 116" & 121" Suspension Mounting Instructions



1. 7 Tooth Drive Wheel       $7 \frac{1}{2}"$
2. 8 Tooth Drive Wheel       $7"$
3. 9 Tooth Drive Wheel       $6 \frac{1}{4}"$
4. 10 Tooth Drive Wheel       $5 \frac{1}{2}"$
5. 116" = 28"      02-818A Wahl Champ Oval Race Suspension,
6. 121" = 28"      02-819A Wahl Champ Oval Race Suspension,

- Rail Lengths:  
   116" –  $40 \frac{1}{2}"$   
   121" – 43"
- If the measurements from the top of the tunnel to the front and/or rear mount holes are different than specified, you must move both mount holes the same distance. For example, if you raise the front mount hole  $\frac{1}{2}"$ , you must also raise the rear mount hole by  $\frac{1}{2}"$ .