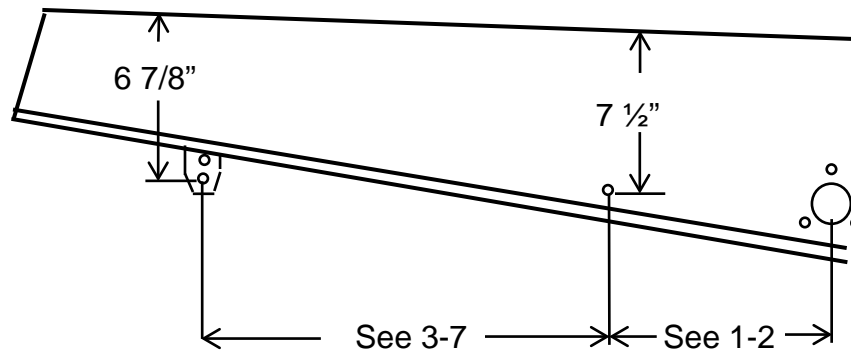




Wahl Cleated Suspension Mounting Instructions



- | | |
|------------------------|---------|
| 1. 6 Tooth Drive Wheel | 14" |
| 2. 7 Tooth Drive Wheel | 13 1/4" |
| 3. 102" = 17 7/16" | 02-110A |
| 4. 112" = 22 3/8" | 02-112A |
| 5. 118" = 25 5/8" | 02-114A |
| 6. 121" = 27 3/8" | 02-116A |
| 7. 132" = 32 1/4" | 02-118A |

- Rail Lengths
102" – 35 1/2"
112" – 40 3/8"
118" – 44"
121" – 45 1/4"
132" – 50 1/4"

- If using Long Travel Rear Scissor, use the upper hole in the rear mounting plate, 5 7/8" from top of tunnel.
- If the measurements from the top of the tunnel to the front and/or rear mount holes are different than specified, you must move both mount holes the same distance. For example, if you raise the front hole 1/2", you must also raise the rear hole by 1/2".